

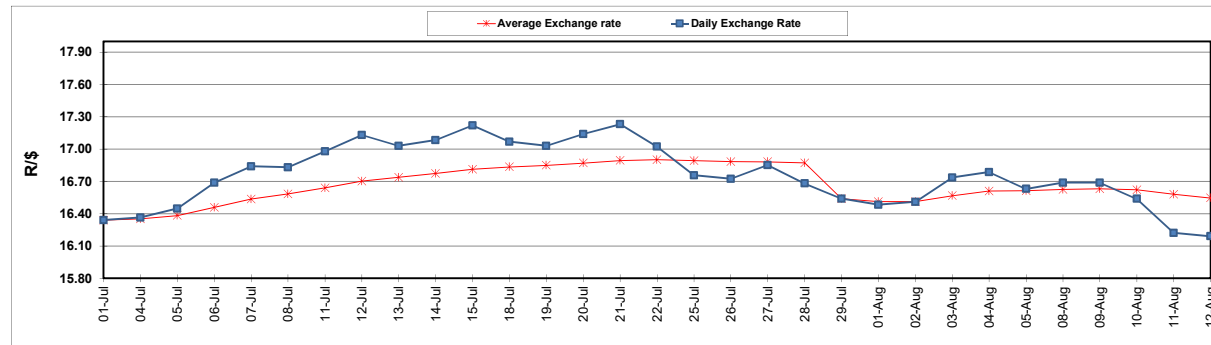
	PETROL 95 ULP	PETROL 93 ULP & LRP	DIESEL 0.05%	DIESEL 0.005%	ILL. PAR.
GAUTENG PUMP PRICE (SA c/l) AS FROM 03/08/2022	2,542.000	2,499.000	-	-	-
WHOLESALE PRICE (SA c/l) AS FROM 03/08/2022	-	-	2,452.440	2,461.840	1,842.288
SINGLE NATIONAL MAXIMUM RETAIL PRICE	-	-	-	-	2,431.000
BASIC FUEL PRICE - 12/08/2022 (SA c/l)	1,256.379	1,233.126	1,436.140	1,454.213	1,491.437
PRESS RELEASE CONTRIBUTION TO BFP 03/08/2022 - 12/08/2022 (SA c/l)	1,482.410	1,439.410	1,600.630	1,610.030	1,624.128
UNIT OVER/(UNDER) RECOVERY - 12/08/2022 (SA c/l)	226.031	206.284	164.490	155.817	132.691
AVERAGE BASIC FUEL PRICE 29/07/2022 - 12/08/2022	1,279.058	1,251.863	1,414.705	1,430.692	1,470.067
AVERAGE UNIT OVER/(UNDER) RECOVERY 29/07/2022 - 12/08/2022	259.807	244.002	230.379	224.611	193.334

ANALYSIS MOVEMENT OF AVERAGE OVER/(UNDER) RECOVERY

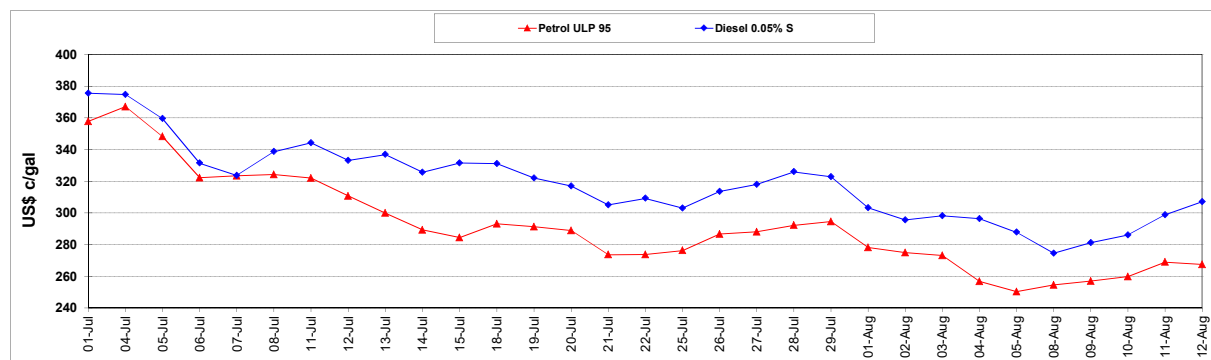
	PETROL 95	PETROL 93	DIESEL 0.05%	DIESEL 0.005%	ILL. PAR.
- MOVEMENT IN INTERNATIONAL PRODUCT PRICES	234.614	219.345	202.515	196.431	164.379
- MOVEMENT IN EXCHANGE RATE	25.193	24.657	27.865	28.180	28.955
AVERAGE UNIT OVER/(UNDER) RECOVERY 29/07/2022 - 12/08/2022	259.807	244.002	230.379	224.611	193.334

R/\$ EXCHANGE RATE - (R/\$16.1900 - 12/08/2022)

EXCHANGE RATE USED IN BASIC FUEL PRICE



INTERNATIONAL PRODUCT PRICES OF BASKET USED IN BASIC FUEL PRICE



BASIC FUEL PRICE IN SA CENTS PER LITRE

